

COVID-19 Testing for Business Travellers

We've partnered up with 3 preferred COVID-19 testing suppliers that offer certified testing laboratories

Book a test with VFS GLOBAL

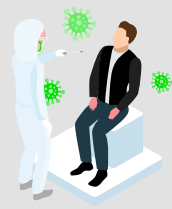
For group booking please contact our call centre on +27 012 425 3053 or send us an email at covidtest.sa@vfshelpline.com



Seamless **online appointment booking** system



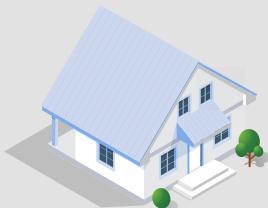
Effortless **online payment**
FCM is able to facilitate payments and handle booking on behalf of the traveller.



Test at one of our **partnered laboratories**, in over 60 locations



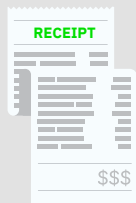
You will receive an **email** confirming your appointment, along with a test **requisition form** to be duly filled and carried to the appointment



At the comfort of your **chosen location**



Results within **48 hours**



Laboratory- **R925**
Doorstep min 5 customers - **R1040**
Doorstep min 10 customers - **R1020**

Book a test with the Travel Doctor

For more information please contact the helpline on **010 900 30 31** or click here



Effortless **online booking**



You are required to **book and pay** for your appointment two working days before the **72 hour** period prior to your flight departure time.



Form to be completed **before your appointment**



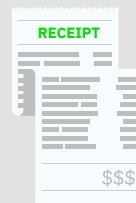
Laboratory testing available at any of our clinics situated in **Rosebank, Northcliff and Cape Town**



Our in-house testing service is **ONLY** for **outbound travellers**.



Results within **40 - 72 hours**



Screening and certification - **R1150**

Book a test with the Mobilabs

For more information please contact **087 350 2506** or click here



Convenient **Online Booking**



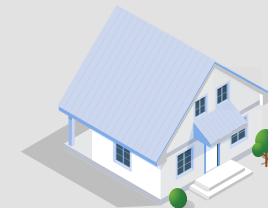
Online Payment
FCM is able to facilitate payments and handle booking on behalf of the traveller.



Form to be completed **before appointment**



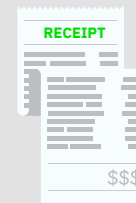
Drive through testing coming soon



Mobile test direct to your home or workplace



Results available in **12-24 hours**



Call out - **R500**
PCR lab test - **R850**
Antigen - **R250**